



2017 PRODUCT CATALOG

PRO AUDIO / VIDEO / LIGHTING

TABLE OF CONTENTS

G-TOUR™ SERIES MIXER CASES.....	2	MOLDED CONSOLE RACKS	22
TSA SERIES MIXER CASES	5	STUDIO RACK CABINETS	22
ATA POP-UP MIXER CASE	6	RACK BAGS	23
ATA MIXER CASES	6	LIGHTWEIGHT RACK BAGS	23
LIGHTWEIGHT MIXER CASES	7	G-TOUR™ SPEAKER CASE.....	24
STRETCHY MIXER COVER	7	PA SYSTEM CASES	24
ROLLING MIXER TRANSPORTER	7	SPEAKER BAGS	25
MIXER BAGS.....	8	ROLLING SUB WOOFER BAG	26
DELUXE G-MIXERBAG SERIES.....	9	SPEAKER TOTE.....	26
G-TOUR™ M15 MICROPHONE CASE.....	10	SPEAKER STAND BAGS	26
TSA SERIES MICROPHONE CASES	11	CONVERTIBLE SPEAKER COVERS	27
WIRED MICROPHONE CASES	12	SPEAKER COVERS.....	27
WIRELESS SYSTEM CASES.....	12	GPA SERIES COVERS	27
WIRED MICROPHONE BAGS	13	STRETCHY COVERS	27
WIRELESS SYSTEM BAGS	13	G-TOUR™ SERIES LCD LIFT CASES.....	28
IN EAR SYSTEM BAGS.....	14	G-TOUR™ LCD CASES	29
IN EAR SYSTEM CASE	14	ROTATIONALLY MOLDED LCD/LED/PLASMA CASE....	30
MICROPHONE / STAND BAG	15	MONITOR2-GO.....	31
MICRO RECORDER PACK	15	LCD TOTES	31
BROADCAST BAG.....	15	LIGHTWEIGHT LCD MONITOR CASES.....	31
MICROPHONE POP FILTER.....	15	CREATIVE IMAC TOTE	32
STUDIO-2-GO® SERIES.....	16	PLASMA SCREEN COVERS	32
ROLLING LAPTOP/MIDI CONTROLLER CASE.....	16	TSA SERIES LAPTOP/PROJECTOR/GEAR CASES.....	33
G-TOUR™ RACK CASES.....	17	ATA LAPTOP/PROJECTOR/GEAR BAGS	34
G-TOUR™ HALF RACKS.....	18	G-TOUR™ LED TRANSPORTERS	35
MOLDED RACKS.....	19	G-TOUR™ LEKO TRANSPORTERS	35
PRO SERIES ROTO MOLD RACKS	21	G-TOUR™ TRUCK PACK.....	37
ROTO MOLDED CASTER BOARD	21	ROTO SERIES.....	37
WOOD CONSOLE RACKS.....	22	TSA SERIES UTILITY CASES	38
CASTER BOARDS.....	22		

GUARD IT WITH GATOR



Look for the video icon to see which products have a demo video online



Look for the "New" icon to see which products are new or updated



Look for the TSA Friendly icon to see which products include our TSA Approved Locking Latch

G-TOUR™ SERIES

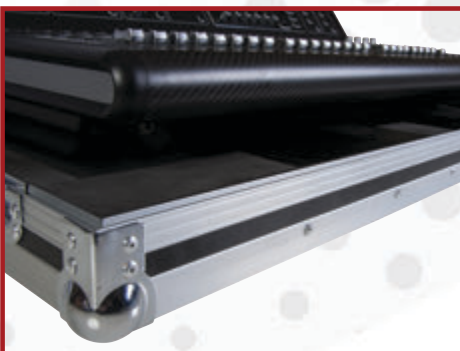
LARGE FORMAT MIXER CASES

- Custom Fit Interior
- Doghouse Design for Easy Multi-Pin Snake Connection
- **(Not Included on G-TOUR-SIEXP-16 or G-TOUR X32CMPCTW)*
- Thick 1/2" Plywood Construction with Laminated Exterior
- EVA Interior Padding
- Red Recessed Twist Latches and Spring-Loaded Rubber-Gripped Handles
- Heavy-Duty Commercial-Grade Hardware
- Upright Transport Design with Four Heavy-Duty Casters (Two Locking)
- G-TOUR X32CMPCTW & G-TOUR-SIEXP-16 Includes Tow-Handle and Two Recessed Wheels **Does not Include Doghouse Design Models*

Model	Description
G-TOURAHQU16	Custom fit for Allen & Heath 16 channel QU 16
G-TOURAHQU24	Custom fit for Allen & Heath 24 channel QU 24
G-TOURAHQU32	Custom fit for Allen & Heath 32 channel QU 32
G-TOUR M32	Custom fit for Midas M32
G-TOUR PRE242-DH	Custom fit for PreSonus Studio Live 24 AI
G-TOUR PRE1642	Custom fit for the PreSonus 16.4.2
G-TOUR PRE3242AI	Custom fit for the Presonus Studio Live A.I.
G-TOURPRE32SLIII	Custom fit for the Presonus Studio Live 32 III
G-TOUR X32	Custom fit for the Behringer X32
G-TOUR X32CMPCTW	Custom fit for the Behringer X32 Compact
G-TOURX32NDH	Custom fit for Behrenger X32 Large Format Mixer
G-TOURYAMTF5	Custom fit for Yamaha TF5 Mixer



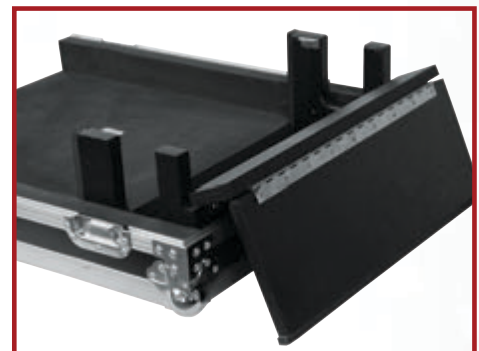
Product Video Available
youtube.com/gatorcases



Reinforced Protective Ball Corners
and Aluminum Valance



Spring Loaded Twist Latches
Rubber-Gripped Comfort Handles
Heavy-Duty Casters*



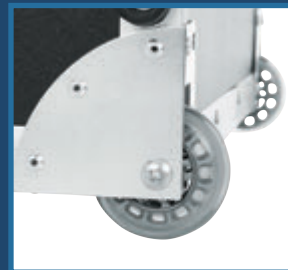
Doghouse for Cable Management*



G-TOUR™ MIXER CASES

- Fully Adjustable Interior to Hold Mixer in Place
- Thick Plywood Construction with Laminated Exterior and Protective Ball Corners
- Red Recessed Twist Latches and Spring-Loaded Rubber-Gripped Handles
- Heavy-Duty Commercial-Grade Hardware
- Removable Lids with Breakaway Hinges Allow Mixer to be Used While in the Case

Model	Interior Dimensions	Rolling
G-TOUR 19X21	19" x 21" x 7"	Tow-handle and Wheels
G-TOUR 20X25	20" x 25" x 8"	None
G-TOUR 20X30	20" x 30" x 6.5"	Tow-handle and Wheels
G-TOUR 24X36	24" x 36" x 5.5"	Tow-handle and Wheels



G-TOUR™ MIXER CASE WITH ARM

- Custom Fit Flight Case with Gator G-ARM 360 Included
- Doghouse Design for Easy Multi-Pin Snake Connection
- ARM is Adaptable to LCD Screens as well as Most Laptops, Tablets and iPad™ Models
- Thick 1/2" Plywood Construction with Laminated Exterior
- Heavy-Duty Casters and Gator Signature Red Hardware
- Case Includes Interior Compartment for Storing Arm Mount During Transport



Product Video Available
youtube.com/gatorcases

Model	Fits
G-TOUR X32-ARM1	Custom fit for the Behringer X32



Adjustable Arm is a Great Solution for Remote Mixer Applications



TITAN[™]SERIES

MIXER CASES

The popular Titan Series from Gator Cases provides unmatched protection for a variety of pro audio equipment. These injection molded cases feature Gator's UltraGuard Technology, providing top notch protection with heavy-duty impact resistance and a water and dust proof seal. Each Titan case is certified with IP 67 and MIL-STD-810F immersion tests which means this case can endure the harshest of elements. The outer shell is constructed of a tough, impact-proof lightweight NK-7[™] resin material and comes with an ATA-300 flight safe rating. Each case secures with the unique easy release Powerclaw[™] latching system and features a soft-grip carry handle. With a variety of sizes available, The Titan series is the ideal choice for a wide range of mixing consoles.

- Black Waterproof Injection Molded Case with Foam Insert for a Custom Fit
- Water and Dust Proof with IP 67 Certification
- ATA-300 Certification
- Impact Proof Lightweight NK-7[™] Resin
- Easy Release Powerclaw[™] Latching System
- Soft Grip Comfort Handle and Pad Lockable
- Mil-STD-810F Immersion Test Certified

Model	Fits
GMIX-PRESON1602-WP	Fits Presonus Studiolive 16.0.2
GMIX-DL1608-WP	Fits Mackie DL1608
GMIX-QSCTM16-WP	Fits QSC Touch Mix 16

UltraGuard TECHNOLOGY



**WATER
PROOF**



**IMPACT
RESISTANT**



**DUST
PROOF**



Product Video Available
youtube.com/gatorcases

TITAN Series Cases are Available in 13 Sizes with Multiple Configurations!

In addition to the mixer configurations listed to the left, we have many universal fit options. Any of these cases are customizable and include optional dividers or diced foam. Visit gatorcases.com for more information.



The incredibly rugged construction ensures your gear stays safe and secure. Powerclaw[™] latches, NK-7[™] military grade resin, an auto pressure release valve and waterproof seals make this the best case solution on the market.



TSA POP-UP MIXER CASE WITH PATENTED POP-UP RATCHET SYSTEM

Gator's Pop-Up Mixer Series uses the patented Pop-Up ratchet system for transporting your mixer flat then elevating to various angles for a quick setup. The compact size allows for smaller transportation area requirements, but this case is big on features. The Pop-Up mixer cases include a high density polyethylene shell, TSA locking latches, threaded rack rails, black uninterrupted valance design, and comfort ergo-grip handles making this a perfect grab-n-go solution.

Patented Pop-Up Ratchet System for Transporting Your Mixer Flat Then Elevating to Various Angles During Use

Model	Weight	Interior Dimensions
GTSA-MIX12PU	21.3 lbs	19" x 21" x 7.5"

TSA MIXER CASES

TSA APPROVED LOCKING LATCH

- Black Uninterrupted Valance Design
- Built-in Inner Mixer Secure Fit System
- TSA Locking Latches with Impact Diversion Dishes
- 1" Interior EPS Foam Protection
- Comfortable Ergo-Grip Handles

Model	Interior Dimensions
GTSA-MIX181806	18" x 18" x 6"
GTSA-MIX192106	19" x 21" x 6"
GTSA-MIX192108	19" x 21" x 8"
GTSA-MIX203006	20" x 30" x 6"
GTSA-MIX203008	20" x 30" x 8"



Product Video Available
youtube.com/gatorcases



ATA MIXER CASES

- Nearly Indestructible Lightweight Polyethylene Construction
- Angled Pad with Hook and Loop Wedge to Hold Mixer Securely
- Tricot-Lined Foam Interior and Rubber Feet
- Completely Removable Lids with Breakaway Hinges

G-MIX 12X24, G-MIX 20X30, G-MIX 22X46 & G-MIX 24X36 FEATURE:

- Carry Handle and Pull-Out Handle and Wheels
- Recessed Locking Twist Latches

G-MIX 19X21 FEATURES:

- Chrome Reinforced Corners
- Pull-Out Handle and Recessed Roller Blade-Style Wheels
- Three Spring-Loaded Recessed Handles

G-MIX 17X18, G-MIX 20X25 FEATURE:

- Spring-Loaded Carry Handle
- Recessed Lockable Twist Latches

Model	Weight	Interior Dimensions
G-MIX 12X24	14.33 lbs	12" x 24" x 4.25"
G-MIX 17X18	16 lbs	17" x 18" x 6.5"
G-MIX 19X21	19.80 lbs	19" x 21" x 7"
G-MIX 20X25	21 lbs	20" x 25" x 8"
G-MIX 20X30	24 lbs	20" x 30" x 6"
G-MIX 22X46	32 lbs	22" x 46" x 6.5"
G-MIX 24X36	29 lbs	24" x 36" x 6.5"



ATA POP-UP MIXER CASE

Gator's ATA Pop-Up Mixer case uses the patented Pop-Up ratchet system for transporting your mixer flat then elevating to various angles in the field. The compact size allows for smaller transportation area requirements. The Pop-Up mixer case includes a high density polyethylene shell, threaded rack rails, spring loaded twist latches, chrome-plated corners, pull-out handle, recessed wheels and spring-loaded handles. This mixer case combines protection with functionality for a complete solution.

Model	Weight	Interior Dimensions
G-MIX-12 PU	19.25 lbs	19.25" x 21" x 6.5"



LIGHTWEIGHT MIXER CASES

EPS FOAM COVERED IN TRICOT

- Rugged Nylon Exterior with Padded Tricot Lining
- Constructed of Heavy-Duty EPS Foam
- Detachable Padded Shoulder Strap, Padded Reinforced Handles and Exterior Accessory Pocket
- G-MIX-L 1618A Includes a 20mm Padded Lid with PE Reinforcement and Fits A&H Zed-14 Series Mixers
- G-MIX-L 1926 Includes a 20mm Padded Lid with PE Reinforcement and Fits A&H Zed-24 Series Mixers

Model	Weight	Interior Dimensions
G-MIX-L 1224	6 lbs	12" x 24" x 5"
G-MIX-L 1618A	7 lbs	16.5" x 19" x 6"
G-MIX-L 1622	7.72 lbs	16" x 22" x 5"
G-MIX-L 1822	10 lbs	18" x 22" x 7"
G-MIX-L 1926	12 lbs	19" x 26" x 6"



ROLLING MIXER TRANSPORTER

- Rugged Plywood Covered in Ballistic Nylon
- Pull-Out Handle and Wheels
- Large Accessory Compartments
- Tricot-Lined Interior

Model	Weight	Interior Dimensions
GPA-720	23 lbs	20" x 13.50" x 13"

STRETCHY MIXER COVER

- Perfect for Mixers, Digital Recording Workstations and Other Gear
- Constructed of Stretchy Lycra
- Adjustable Cord Assures Snug Fit
- Keeps Dust Off of Equipment When Not In Use
- Hand Washable

Model	Weight	Dimensions
GMC-2222	0.4 lbs	22" x 22" x 6"



MIXER BAGS

PADDED NYLON BAGS

The sleek and stylish G-MIXERBAG series provides storage for mixers and various DJ equipment. The all-black Nylon exterior is highlighted with 'Gator red' accents and zipper pulls. The thick padded interior is carpet lined to keep your gear looking brand new. A large zippered front pocket is perfect for cables, power supplies, and include cable management straps. Throw this bag over your shoulder with the adjustable strap and never leave home without the gear you need. The G-MIXERBAG series is offered in ten different sizes ranging from 9" x 9" up to 25" x 19".

- Rugged Nylon Exterior
- 5mm Dual-Layered Padded Protection with Tricot Lined Interior
- Removable Shoulder Strap
- Comfortable Webbed Carry Handles
- Large Zippered Front Storage Pocket with Cable Management
- Reinforced Rubber Grip Feet on Bottom of Bag
- G-MIXERBAG-1306 Available to Fit Behringer X-Air Series Mixers

Model	Weight	Interior Dimensions
G-MIXERBAG-0909	2.5 lbs	9" x 9" x 2.75"
G-MIXERBAG-1212	3 lbs	12" x 11.75" x 5.5"
G-MIXERBAG-1306	1.4 lbs	13.1" x 6.25" x 6"
G-MIXERBAG-1515	3 lbs	15.125" x 14.75" x 5.5"
G-MIXERBAG-1815	4 lbs	18.5" x 15" x 6.5"
G-MIXERBAG-1818	4 lbs	18" x 17.75" x 5.5"
G-MIXERBAG-2020	4 lbs	20" x 20" x 5.5"
G-MIXERBAG-2118	5 lbs	21" x 18.5" x 7"
G-MIXERBAG-2123	5 lbs	21" x 23" x 6"
G-MIXERBAG-2519	5 lbs	25" x 19" x 8"



Product Video Available
youtube.com/gatorcases



Reinforced Rubber Grip Feet
on the bottom of the bag
protect your gear from hard
surfaces and help absorb shock.



Reinforced Carry Handles
provide comfort and security
when you're on the go with
your gear.



NEW **G-MIXERBAG-1306**
Designed to Fit all Models of
the Behringer X-AIR Series Mixers

(Also fits Behringer SD8 & SD16 Stage
Boxes and similar sized equipment)

DELUXE G-MIXERBAG SERIES

LARGE FORMAT PADDED MIXER BAGS

- Rugged Nylon Exterior
- 360 Degree Zipper Opening
- Angled Design for Snug Fit
- Interior Hook and Loop Straps to Hold Mixer in Place
- Thick Padded Interior with Soft Tricot Lining
- Reinforced Protective Sheet Built-In to Front Flap
- Large Exterior Pocket with Cable Management and Dividers
- Reinforced Handles with Wrap Around Secure Strap
- Side Handles for Dual Carry Option and Easy Loading
- Removable, Adjustable Carry Strap
- Rubber Protective Feet on Bottom



Model	Interior Dimensions
G-MIXERBAG-2621	26" x 21" x 8.5"
G-MIXERBAG-3121	31" x 21" x 7"
G-MIXERBAG-3621	36" x 21" x 8"



TITAN SERIES™

WATERPROOF MICROPHONE CASES

- Black Waterproof Injection Molded Case with Foam Insert to Hold Microphones
- Available to Fit Six or Sixteen Hand Held Microphones or Four Wireless Microphones
- Water and Dust Proof with IP 67 Certification
- ATA-300 Certification
- Impact-Proof Lightweight NK-7™ Resin
- Easy Release Powerclaw™ Latching System
- Mil-STD-810F Immersion Test Certified

Model	Fits
GM-06-MIC-WP	6 Hand Held Microphones
GM-16-MIC-WP	16 Hand Held Microphones and Accessories
GM-04-WMIC-WP	4 Wireless Microphones, Body Packs, Headsets and Accessories



Comfortable Handle and Built-In Pressure Release Valve to Regulate Air Pressure Inside the Case During Altitude Changes or Submersion

UltraGuard

TECHNOLOGY



WATER
PROOF



IMPACT
RESISTANT



DUST
PROOF



GM-16-MIC-WP



GM-06-MIC-WP



GM-04-WMIC-WP

TSA SERIES

TSA WIRED MICROPHONE CASES

- Lightweight Polyethylene Construction
- TSA Locking Latches
- Black Uninterrupted Valance



Product Video Available
youtube.com/gatorcases

Model	Weight	Fits
GTSA-MIC15	5.5 lbs	15 mic drops
GTSA-MIC30	6 lbs	30 mic drops

MULTIPLE ATA WIRELESS SYSTEM CASES

- Rugged Polyethylene Construction
- TSA Locking Latches with Impact Diversion Dishes
- Comfortable Ergo-Grip Handles

GM-6W-TSA FEATURES

- Holds Six Wireless Microphones with Storage for Eighteen Batteries
- Protective Foam-Lined Interior

GM-7W-TSA FEATURES

- Holds Seven Wireless Microphones with Battery Attached (up to 11")
- Two Lift-Out Trays with Four Adjustable Dividers
- Protective Tricot-Lined Interior

Model	Weight	Mic Drop Depth	Interior Receiver Dimensions (2 Sections)
GTSA-MICW6	5.2 lbs	2.25" x 10.5"	N/A
GTSA-MICW7	10 lbs	11"	9.5" x 5.5" x 1.75" (each section)

GTSA-MIC15



GTSA-MIC30



GTSA-MICW7



GM-7W Includes
Two Lift Out
Trays with Four
Adjustable Dividers

GM-6W-TSA
Features Six Fitted
Microphone and
Eighteen Battery
Slots



GTSA-MICW6

G-TOUR™ MICROPHONE CASE

Gator's G-Tour M15 microphone case is where functionality meets durability. The case features 15 foam padded microphone drops and a large storage space for accessories. With Gator's signature red recessed twist latches, spring-loaded rubber-gripped handles, thick plywood construction and heavy-duty hardware, this case is ready for the road.

Model	Weight	Mic Drop Depth	Interior Dimensions
G-TOUR M15	17.64 lbs	5.25"	12.25"x9.5"x8"



15 Individual
Foam Padded
Microphone
Drops

The G-TOUR M15
Features Fifteen Foam
Padded Mic Drops for a
Perfect Fit



WIRED MICROPHONE CASES

- Lightweight Polyethylene Construction
- Triple Chrome Plated Locking Latches
- Compact Briefcase Design

Model	Weight	Fits
GM-6-PE	4 lbs	6 Mic Slots

The GM-6-PE Features
Six Foam Form-Fitted
Microphone Spaces



MULTIPLE ATA WIRELESS SYSTEM CASE

- Polyethylene Case Holds Four Wireless Systems with Four Half Rack Shelves with Double Sided Tape Included
- Convuluted Foam Lid and Reinforced Chrome Corners
- Recessed Chrome Twist Latches and Top Mounted Carry Handle
- Carpet Lined Interior and Accessory Pocket

Model	Weight	Mic Drop Depth	Interior Receiver Dimensions (2 Sections)
GM-4WR	11 lbs	10.5"	11" x 16" x 1.5"



Four Half Rack
Shelves Hold Four
Wireless Systems

WIRELESS SYSTEM BAGS

GM-2W FEATURES

- Designed to Fit Two Wireless Systems
- Two Mic Drops and Compartments for Wireless Receivers
- Durable Rugged Nylon Exterior
- Storage Compartments and Shoulder Strap

GM-5W FEATURES

- Designed to Fit Five Wireless Microphones
- Durable Rugged Nylon Exterior with Shoulder Strap
- Large Storage Compartment for Receivers and Accessories

Model	Weight	Mic Drop Depth	Interior Receiver Dimensions
GM-2W	3 lbs	8.5"	8.5" x 8.5" x 3.25"
GM-5W	2.65 lbs	8.5"	8.5" x 7" x 4"



GM-2W



GM-5W



GM-12B

GM-4

Adjustable Shoulder Strap and Comfortable Handle

WIRED MICROPHONE BAGS

GM-4 WIRED MIC BAG

- Durable Nylon Construction
- 4 Microphone Drops
- Web Handles and Comfort Shoulder Strap
- Interior Storage Space and Exterior Storage Pocket

GM-12B WIRED MIC BAG

- Durable Nylon Construction
- Exterior Pocket for Cables and Accessories
- Padded Shoulder Strap for Easy Transport
- The GM-12B is Specifically Designed to Hold Twelve Microphones

Model	Fits	Mic Drop Depth
GM-4	4 hand held microphones	7"
GM-12B	12 hand held microphones	5.5"

SINGLE WIRELESS SYSTEM BAG

- Designed for Single Wireless System to be Used in the Bag
- Access for Antenna to be Extended While in Bag
- Holds Lavaliers, Cables, and Wireless Mic with Receiver Mounted
- Front and Rear Access Unzips for Easy Setup in the Field
- Shoulder Strap and Information Card Window

Model	Weight	Mic Drop Depth	Interior Receiver Dimensions
GM-1W	4 lbs	8.25"	8.5" x 8" x 2"



GM-1W

WIRELESS SYSTEM CASES

SINGLE ATA WIRELESS SYSTEM CASE

- Designed for Single Wireless System to be Used in the Case
- Space for Belt Pack, Microphone, Lavaliers, Cables, and Hand-Held Microphone
- Rugged Stackable Polyethylene Construction
- Access for Antenna to be Extended While in the Case and Adjustable Tray Height

Model	Weight	Mic Drop Depth	Interior Receiver Dimensions
GM-1WP	5 lbs	8.25"	8.5" x 8.5" x 2"



Front and Rear Access for Easy Setup in the Field

SINGLE WIRELESS MICROPHONE SYSTEM CASE

- Slim Rigid 5mm EVA Rubber Foam Design
- Holds Most Common Sized "Half-Rack" Wireless Units
- Front and Rear Access Unzips for Easy Setup in the Field
- Storage for Receiver, Hand-held Microphone, Power Supply, Belt Pack Transmitter, and Lapel Microphones

Model	Weight	Receiver Cavity
GM-1WEVAA	1.5 lbs	8" x 8" x 1.75"



Product Video Available
youtube.com/gatorcases



Zipper Access to Allow Antenna to be in Place and Functional While in the Bag



IN EAR SYSTEM TRANSPORT

IN EAR MONITOR CASE

- Titan Series Waterproof Injection Molded Case with Foam Insert to Fit Half Rack Wireless "In Ear" Monitoring System
- Storage for Transmitter, Ear Buds, Receiver Body Pack and Power Supply and Accessories
- Water-Proof Injection Molded Construction
- Automatic Pressure Equalizing Valve
- Patented, Easy Release Powerclaw™ Latching System
- Pad-lockable with Integrated Lock Loop
- Soft Grip Foldable Comfort Handle

Model	Dimensions
G-IN EAR-WP	Up to 8.5" x 8" x 1.75"



IN EAR MONITOR BAG

- Designed to Fit Most Half Rack Wireless "In Ear" Personal Monitoring Systems
- Storage for Transmitter, Ear Buds, Receiver Body Pack, and Power Supply
- Heavy-Duty Padded Protection
- Rugged Nylon Black Exterior
- Top Access for Antenna to Be Extended While in the Bag



Product Video Available
youtube.com/gatorcases

Model	Dimensions
G-IN EAR SYSTEM	Up to 8.5" x 8" x 1.75"

MICRO RECORDER PACK

- Black EVA Foam Shell Exterior
- Designed to Fit Most Micro Recorders, Headphones and Accessories
- Storage for Medium Size Headphones
- Storage for SD Media Cards, Batteries and USB Cables
- Includes Removable Shoulder Strap

Model	Weight	Main Cavity
G-MICRO PACK	2.5 lbs	8" x 10" x 2"



BROADCAST BAG

- Rugged Nylon Utility Bag for Carrying a Field Recorder
- Stores Most Field Recorders, Two Microphones, Headphones and Cables
- One Cavity for Smaller Handheld Micro Recorders
- One Cavity for Larger Format Field Recorders
- Viewable Window to See Recorder Control Panel While in Bag
- Polyurethane Foam Protection and Adjustable Shoulder Strap



Side Access Pockets for External Cable Entry

Model	Weight	Main Cavity	Storage Cavity	Mic Drops (x2)	External Pockets
G-BROADCASTER	5 lbs	8" x 10" x 2"	2" x 4" x 8"	2" x 9"	8" x 8" x 2.5"

MICROPHONE / STAND BAG

- Three Separate Compartments for Microphone Stands to Prevent Scratches and Dings
- Durable Nylon Construction with Five Form Fitted Microphone Drops
- Web Handles and Zippered Cable Pocket

Model	Weight	Interior Dimensions	Exterior Dimensions
GX-33	4 lbs	43" x 8" x 8"	44" x 10.24" x 8.25"



Adjustable Carrying Strap

MICROPHONE POP FILTER



11.5" Goose Neck and Clamp Included

- Nylon 6" Screen Pop Filter
- C-Clamp will Fit Most Standard Microphone Stand Shafts and Booms

Model	Weight	Fully Extended
GM-POP FILTER	2.5 lbs	17" x .5" x 6.25"

TITAN SERIES™

WATER PROOF INJECTION MOLDED CASES

- Water and Dust Proof with IP 67 Certification
- Custom Fit Interior for Handheld Recording Devices
- ATA-300 Certification
- Mil-STD-810F Immersion Test Certified
- Impact Proof Lightweight NK-7™ Resin
- Easy Release Powerclaw™ Latching System
- Soft Grip Comfort Handle
- Pad-Lockable

Model	Fits
GU-ZOOMH6-WP	Zoom H6 and accessories



Product Video Available
youtube.com/gatorcases



STUDIO-2-GO® SERIES

ATA STYLE STUDIO-2-GO

- Rugged ATA-Style Polyethylene Construction
- 4U Rack Rail on the Bottom for Rack Mount Recording Devices and Disk Drive
- Adjustable Laptop Compartment with Strap Tie-Downs
- Access Hole Between Top and Bottom Compartments Allow the Laptop to be Permanently Connected to the Recording Gear
- Includes Retractable Handle and Wheels

Model	Weight	Interior Dimensions
GRC-STUDIO4GO-W	21 lbs	17.5" x 19" x 7"

STUDIO-2-GO BAG

- Designed to be the Modern-Day Recording Center
- Features 2U of Rack Rail for Rack Mount Recording Devices and Disk Drive
- Padded Area Above for Storing a Laptop
- Easy Zip Open Front and Rear Covers
- External Storage Compartment, Shoulder Strap and Padded Carrying Handles

Model	Weight	Interior Dimensions
GSR-2U	15 lbs	13" x 19" x 3.5"



ROLLING LAPTOP/MIDI CONTROLLER CASE

- Rolling Backpack Designed to Carry 25-Note Controllers and Laptop
- Expandable Top Accommodates up to 37 Note Controllers
- Exterior Storage for Interfaces, Cables, and Other Accessories
- Removable, Retractable Wheels and Handle
- Backpack Straps Can be Hidden Inside Exterior Pocket When Handle is in Use

Model	Weight	Interior Dimensions
GK-LT25W	9.20 lbs	25" x 12" x 3"

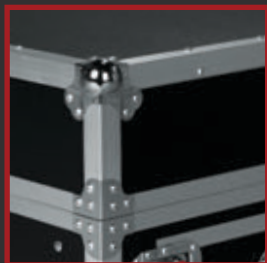


Padded Interior and Inserts to Protect Gear

G-TOUR™ RACK CASES

ALL G-TOUR RACKS FEATURE

- Thick Plywood Construction with Laminated Exterior
- Tongue and Groove Extruded Aluminum Valance
- Heavy-Duty Commercial-Grade Plated Hardware
- 3.2mm Thick Front and Rear Rack Rails



Heavy-Duty Protective Ball Corners



Signature Red Recessed Twist Latches and Spring-Loaded Handles



Product Video Available
youtube.com/gatorcases

G-TOUR-GRC12X12 has a Fixed 12 Space Slant Top and 12 Space Bottom. Fits Popular Mixers Like the A&H Mix Wizard



G-TOUR-GRC12X12

G-Tour Shock Racks Feature Compressed Shock Absorbing Foam Suspension



G-TOUR SHK12 CAST

Model	Rack Type	Rack Units	Rackable Depth
G-TOUR SHK8 CAS	Shock Rack W/Casters	8	17"
G-TOUR SHK12 CAS	Shock Rack W/Casters	12	17"
G-TOUR EFX2	Shallow FX Racks	2	13"
G-TOUR EFX4	Shallow FX Racks	4	13"
G-TOUR EFX6	Shallow FX Racks	6	13"
G-TOUR 2U	Standard	2	20.25"
G-TOUR 4U	Standard	4	20.25"
G-TOUR 6U	Standard	6	20.25"
G-TOUR 8U	Standard	8	20.25"
G-TOUR 10U	Standard	10	20.25"
G-TOUR 12U	Standard	12	20.25"
G-TOUR 4UW	Standard W/ 2 Wheels & Retractable Handle	4	20.25"
G-TOUR 10U CAST	Standard W/ 4 Fixed 4" Casters 2 Of Which Lock	10	20.25"
G-TOUR 12U CAST	Standard W/ 4 Fixed 4" Casters 2 Of Which Lock	12	20.25"
G-TOUR 14U CAST	Standard W/ 4 Fixed 4" Casters 2 Of Which Lock	14	20.25"
G-TOUR 16U CAST	Standard W/ 4 Fixed 4" Casters 2 Of Which Lock	16	20.25"
G-TOUR12UCA-24D	12mm (1/2") Constructed Deep Racks W/Casters	12	24"
G-TOUR16UCA-24D	12mm (1/2") Constructed Deep Racks W/Casters	16	24"
G-TOUR 10X12 PU	Pop-Up Console Rack	10 Top / 12 Front	20.25"
G-TOUR 10X14 PU	Pop-Up Console Rack	10 Top / 14 Front	20.25"
G-TOUR 10X16 PU	Pop-Up Console Rack	10 Top / 16 Front	20.25"
G-TOUR-GRC-1406	Fixed Top Compact Console Rack	14 Top / 6 Front	19.25"
G-TOUR 10X12	Fixed Top Console Rack W/ Top & Front Lid W/Rear Doors	10 Top / 12 Front	19.25"
G-TOUR-GRC12X12	Fixed Top Console Rack W/ Top & Front Lid W/Rear Doors	12 Top / 12 Front	23.75"

Pop-Up Racks Feature 19" Console Rack with Pop-Up Top-Loaded Rack. Ratchet Top Allows Adjusting to Various Angles During Use and Transporting with Top Flat



G-TOUR10X16 PU

G-TOUR-GRC-1406 has a 14U Mixer Section with Space for Cable Routing



G-TOUR-GRC-1406

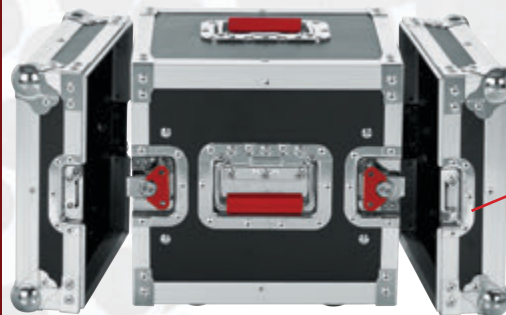


Product Video Available
youtube.com/gatorcases

G-TOUR™ HALF RACKS

- G-Tour Style Rack with Rackable Width of 10.39 Inches
- Great Compact Solution for Half Rack Gear
- 8" Front Rail to Rear Rail Depth
- Includes Rear Rack Rail

Model	Rack Type	Rack Units	Rackable Depth
G-TOUR 4UHR	Half Rack	4	8"
G-TOUR 6UHR	Half Rack	6	8"



G-TOUR 6UHR

Front and Rear Lids Allow Complete Access to Gear



Front and Rear Rack Rails

Check out our Rackworks line of half rack accessories including half size drawers, shelves, and panels. Visit gatorco.com for more info!



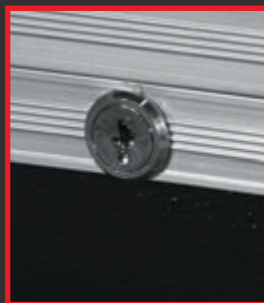
G-TOUR 4UHR

MOLDED RACKS

Gator's polyethylene molded (LLDPE) rack cases are the perfect lightweight yet durable rack solution. The comfortable recessed side handles and threaded, field-replaceable commercial-grade plated front and rear rack rails round off the cases.



Butterfly-Style Twist Latches



Locking Lid

Model	Type	Rack Units	Rack Depth
GR-2S	Shallow	2	14.75"
GR-3S	Shallow	3	14.75"
GR-4S	Shallow	4	14.75"
GR-6S	Shallow	6	14.75"
GR-2L	Standard w/ Locking Lids	2	19.25"
GR-4L	Standard w/ Locking Lids	4	19.25"
GR-6L	Standard w/ Locking Lids	6	19.25"
GR-8L	Standard w/ Locking Lids	8	19.25"
GR-10L	Standard w/ Locking Lids	10	19.25"
GR-12L	Standard w/ Locking Lids	12	19.25"
GRR-4L	Rolling w/ Locking Lids	4	19.25"
GRR-6L	Rolling w/ Locking Lids	6	19.25"
GRR-8L	Rolling w/ Locking Lids	8	19.25"
GRR-10L	Rolling w/ Locking Lids	10	19.25"
GRR-4PL-US	Rolling/Power w/ Locking Lids	4	19.25"
GRR-6PL-US	Rolling/Power w/ Locking Lids	6	19.25"
GRR-8PL-US	Rolling/Power w/ Locking Lids	8	19.25"
GRR-10PL-US	Rolling/Power w/ Locking Lids	10	19.25"

SHALLOW RACKS

- Compact 14.75" Rackable Depth
- Front and Rear Rack Rails



Product Video Available
youtube.com/gatorcases

STANDARD RACKS

- 19.25" Rackable Depth
- Front and Rear Rack Rails



ROLLING RACKS

- Rugged Pull-Out Handle
- Roller Blade-Style Recessed Wheels
- Front and Rear Rack Rails



ROLLING POWERED RACKS

- Master On/Off Switch with Indicator Light
- Five Outlets (Four Rear, One Front)
- Push to Reset 15 Amp Circuit Breaker
- Rugged Pull-Out Handle and Roller Blade-Style Recessed Wheels
- Front and Rear Rack Rails





G-SHOCK-4L

Independent Rubber Shock Absorbers at Each Corner

POLYETHYLENE MOLDED SHOCK RACKS

Gator's lightweight polyethylene shock racks are built for protection and function. The shock rack is specifically designed to allow 360 degree air ventilation around equipment to keep your gear running cool. Adjustable interior sliding support on each side of the rack adjusts front to back and up and down for rear support of gear to eliminate shifting and jostling. Recessed side handles give your hands a break while the locking lid gives you peace of mind.

Model	Rack Units	Rack Depth
G-SHOCK-4L	4	19.5"
G-SHOCK-8L	8	19.5"
G-SHOCK-12L	12	19.5"
G-SHOCK-16L	16	19.5"

CONSOLE RACKS

- Lightweight Polyethylene Construction
- Front, Rear and Top Rack Rails with Rear Wire Access
- Recessed Side Handles
- Compact Size for Easy Transport

GRC Racks Have 7mm Threaded Field Replaceable Commercial-Grade Rack Rails

GRC-10X12 PU

Pop-Up Top-Loaded Racks Include a Ratchet Top Which Allows Adjusting to Various Angles During Use and Transporting with the Top Flat



GRC-10X8

GRC-10x11 PU & GRC-12x10 PU Feature 4" Heavy-Duty Industrial Casters, Two of Which are Locking



CONSOLE RACKS

Model	Rack Units	Rack Depth
GRC-6X4	6 Top / 4 Front	15.75"
GRC-8X2	8 Top / 2 Front	19.25"
GRC-10X2	10 Top / 2 Front	22.75"
GRC-10X4	10 Top / 4 Front	22.75"
GRC-10X6	10 Top / 6 Front	22.75"
GRC-10X8	10 Top / 8 Front	22.75"

POP-UP CONSOLE RACKS

Model	Rack Units	Rack Depth
GRC-10X8 PU	10 Top / 8 Front	23.25"
GRC-10X12 PU	10 Top / 12 Front	23.25"
GRC-12X10 PU	12 Top / 10 Front	26.75"



Product Video Available
youtube.com/gatorcases

ROLLING RACK BASE

Rolling rack bases are made of lightweight polyethylene plastic and conveniently fit under any Gator GRC or standard rack case. The four easy rolling wheels include two locking wheels for keeping the rack base in position. The butterfly-style twist latches and recessed side handles make it the ultimate pack and load solution.

Model	Rack Units	Rack Depth
GRC-BASE-10	10	22.75"
GRC-BASE-14	14	22.75"

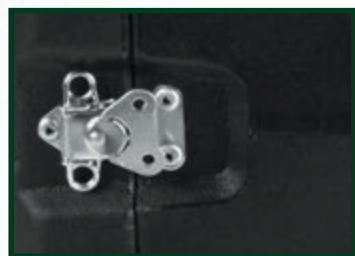
Stacks Beneath any Gator GRC Console or Standard Rack



GRC-BASE-10

PRO SERIES ROTO MOLD RACKS

Gator's virtually indestructible rotationally molded polyethylene rack cases are the ultimate in durability. The 19" deep rack cases are available in standard or rolling versions. All cases come with full sized front and rear rack lids for easy access. The rolling version includes a telescoping tow-handle and rugged in-line style wheels. The black version is made entirely from recycled materials. *Custom colors available for minimum quantity orders.



Molded-In Ergonomic Side Carry Handles



Recessed Steel Twist Latches



Stackable Design



Built-In Tow Handle and Wheels



Made From Recycled Materials

Description	Model	Rack Units	Rack Depth
Standard	G-PRO-2U-19	2	19"
Standard	G-PRO-4U-19	4	19"
Standard	G-PRO-6U-19	6	19"
Standard	G-PRO-8U-19	8	19"
Standard	G-PRO-10U-19	10	19"
Standard	G-PRO-12U-19	12	19"

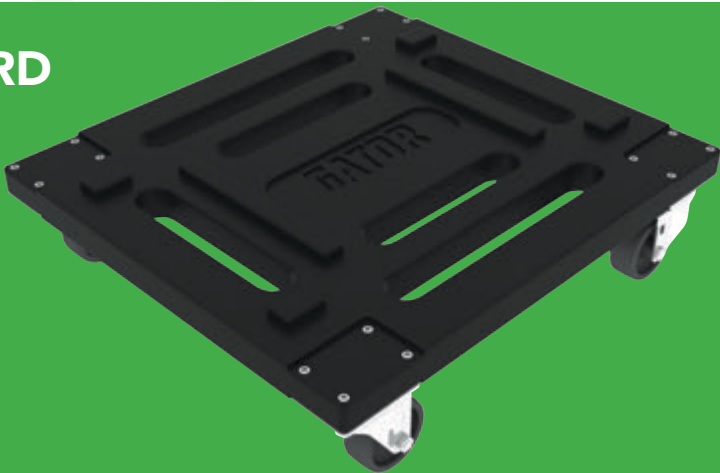
Description	Model	Rack Units	Rack Depth
Rolling	G-PROR-4U-19	4	19"
Rolling	G-PROR-6U-19	6	19"
Rolling	G-PROR-8U-19	8	19"

Custom colors available for minimum quantity orders. Email info@gatorcases.com for more information.

ROTO MOLDED CASTER BOARD

- Virtually Indestructible Polyethylene Construction
- Four Casters, Two Locking / Two Non-Locking
- Fits Both G-PRO Rack Series and GR-L Rack Series

Model	Fits
G-CASTERBOARD	G-PRO and GR-L Racks





MOLDED CONSOLE RACKS

- Rotationally- Molded Polyethylene Console Rack
- Rugged Nylon Dust Cover
- Heavy-Duty Rack Rail
- Molded in Carry Handles

Model	Weight	Rack Units	Rack Depth
GDJ-8X2	12 lbs	8 Top / 2 Front	15.5"
GDJ-8X4	16 lbs	8 Top / 4 Front	15.5"
GDJ-10X6	19 lbs	10 Top / 6 Front	15.5"

WOOD CONSOLE RACKS

- Lightweight Wood Console Racks
- Slanted Top Rack Rail is Perfect for Mixers
- Comfortable Side Handles
- Removable Padded Cover with Hook and Loop Over the Front, Top and Rear

Model	Weight	Rack Units	Rack Depth
GRCW-10X4	22 lbs	10 Top / 4 Front	20.25"



STUDIO RACK CABINETS

- 19" EIA Standard Racks
- 5/8" Thick MDF Furniture Grade Black Oak Laminate
- 3.2mm Heavy-Duty Cold Rolled Steel Rack Rails

Model	Description	Rack Units	Rackable Depth
GR-STUDIO-4U	Standard Studio Rack	4	18"
GR-STUDIO-8U	Standard Studio Rack	8	18"
GR-STUDIO-12U	Standard Studio Rack	12	18"
GR-STUDIO-16U	Standard Studio Rack	16	18"



Thick MDF
Furniture Grade
Black Oak
Laminate for
Durability that
Lasts

CASTER BOARDS

- High Density 3/4" Industrial Plywood
- Held in Place by Two Locking Straps
- Supports up to 400 Pounds
- 4" Industrial Grade Casters

Model	Fits
GA-100	Standard Racks
GA-200	Shock Racks



RACK BAGS

- Heavy-Duty Rack Bag Great for Effects Processors and Recording Equipment
- Polyethylene-Reinforced Interior Frame and Internal Reinforced Aluminum Valance
- Rear Flap Allows Access to Entire Panel of Equipment
- Dual Comfort Grip Carry Handles
- Adjustable Shoulder Strap
- 600-Denier Nylon Exterior
- Exterior Pocket for Cables and Accessories

Model	Weight	Rack Units	Rack Depth
GRB-2U	9 lbs	2	14"
GRB-3U	12 lbs	3	14"
GRB-4U	14 lbs	4	14"



LIGHTWEIGHT RACK BAGS

- Lightweight Style Rack Bag Great for Effects Processors, Recording Equipment and Sound Modules
- Polyethylene Reinforced Interior Frame
- Internal Reinforced Aluminum Valance
- Rear Flap Allows Access to Entire Panel of Equipment
- Ergo Grip Carry Handle
- 600-Denier Nylon Exterior
- Exterior Pocket for Cables and Accessories

ROLLING BAG FEATURES

- Retractable Tow-Handle and Recessed Wheels
- Heavy-Duty Shoulder Strap

STANDARD BAG FEATURES

- Heavy-Duty Shoulder Strap

Model	Weight	Rack Units	Rack Depth	Style
GR-RACKBAG-2U	8 lbs	2	13"	Standard
GR-RACKBAG-3U	11 lbs	3	13"	Standard
GR-RACKBAG-4U	13 lbs	4	13"	Standard
GR-RACKBAG-2UW	8 lbs	2	13"	Rolling
GR-RACKBAG-3UW	11 lbs	3	13"	Rolling
GR-RACKBAG-4UW	13 lbs	4	13"	Rolling

Retractable Tow Handle is Mounted Internally for Added Durability



G-TOUR™ SPEAKER CASE

- G-Tour Double Speaker Cases Fit Two Loudspeakers
- Rugged Laminated Plywood Construction
- EVA and PE Padding for Internal Protection
- Internal Cable and Accessory Storage
- Red Recessed Twist Latches and Spring-Loaded Rubber Gripped Handles
- Four 3" Casters, Two Locking



Padded Divider with Internal Storage Compartment

Removable Foam Blocks to Fit Various Loudspeakers



Dishes on Top Allow Cases to Be Stacked

Model	Weight	Fits
G-TOUR SPKR-212	35 lbs	2-12" EON style speakers
G-TOUR SPKR-215	45 lbs	2-15" EON style speakers
G-TOUR SPKR-2K8	28 lbs	2 QSC K8 speakers
G-TOUR SPKR-2K10	30 lbs	2 QSC K10 speakers
G-TOUR SPKR-2K12	35 lbs	2 QSC K12 or EV ELX112P speakers

PA SYSTEM CASES

- Case for Small or Large "Passport" Type PA Systems
- Hybrid Lightweight Wood and Nylon Construction
- Wheels and Retractable Handle
- Removable Internal Divider for Yamaha-Style PA
- Large External Pocket
- Reinforced Web Handle



G-PA TRANSPORT-LG Shown with Removable Divider

Model	Fits
G-PA TRANSPORT-LG	Passport 300 & 500, Fender Passport Venue, Behringer EPA300, Yamaha Stagepas 250M, Stagepas 500, Stagepas 600i
G-PA TRANSPORT-SM	Passport 150, Samson XP308i, Yamaha Stagepas 150M, Stagepas 300, Stagepas 400i



G-PA TRANSPORT-LG



Product Video Available
youtube.com/gatorcases

SPEAKER BAGS

- Designed to Fit Most Popular Molded Speaker Cabinets
- Bottom of Bag has Structured Foam to Cradle the Speaker
- Durable Pull-Out Handle and Six Wheel Assembly (Not Included on GPA-E15 or GPA-450-515)
- Rugged Nylon Construction with 10mm Side Foam
- Two Accessory Pockets and a Large Side Pocket
- Dual Zipper Design for Easy Loading

Model	Weight	Interior Dimensions
GPA-712SM	12 lbs	24" x 16" x 14.25"
GPA-712LG	13 lbs	27" x 17" x 15.5"
GPA-715	14 lbs	28.5" x 18.5" x 16"

Model	Weight	Interior Dimensions
GPA-E15	9 lbs	26" x 15.75" x 15"
GPA-450-515	9 lbs	26" x 15.75" x 15"



GPA-712LG

GPA-712LG FITS

MACKIE SRM450V2
JBL EON612
YAMAHA MSR400
PEAVEY IMPULSE 12D
EV ELX112P
BEHRINGER EUROLIVE B412DSP
HARBINGER APS12

GPA-712SM FITS

QSC K12
MACKIE TH-12A
JBL STX812M
JBL JRX212M
JBL EON610
BEHRINGER B212D

GPA-715 FITS

MACKIE TH-15A
BEHRINGER EUROLIVE B315A
BEHRINGER EUROLIVE B215A
EV ELX115P
JBL PRX715
JBL EON515
JBL EON515XT

GPA-E15 FITS

JBL EON515/515XT

GPA-450-515 FITS

MACKIE 450/300
JBL EON515/515XT



GPA-715

Dual Zipper Design



GPA-777 FEATURES

- Heavy-Duty Nylon Exterior with Roto Molded Polyethylene Base
- Retractable Tow-Handle and Nylon Web Carry Handles
- Four 100 Pound Test In-Line Wheels
- Fits EON 515/515XT, MACKIE SRM 450, EV SX100 and Many Other Speaker Enclosures
- 20mm Tricot Padded Interior and External Accessory Pocket

Model	Weight	Interior Dimensions
GPA-777	16 lbs	27.5"x18"x17.5"

ROLLING SUB WOOFER BAG

- Nylon Exterior with Built-In Caster Plate
- Four Wheels, Two Fixed for Control While Transporting
- Adjustable, Removable Nylon Strap Tow-Handle
- Four Reinforced Lift Handles and Two Nylon Web Handles to Assist Placing on Sub Woofer
- Two Protective Skid Bars
- Large External Accessory Pockets for Cables and Accessories

Large External Pockets

Easy Drop and Flip Design

Model	Weight	Interior Dimensions
G-SUB2225-24BAG	21 lbs	26.25" x 24" x 22"

SPEAKER TOTE



- Rugged Water Resistant Polyester Construction
- Protective, Padded Interior with Soft Lining
- Large Exterior Pocket for Cables and Accessories
- Secure-Wrap Padded Handles

Speaker Totes Designed to Fit:

QSC K8, 10, 12, 15
Turbosound iQ8, 10, 12, 15
Yamaha DRX8, 10, 12, 15

Model	Interior Dimensions
GPA-TOTE8	18" x 11" x 11"
GPA-TOTE10	21" x 13" x 12"
GPA-TOTE12	21" x 14.5" x 14.5"
GPA-TOTE15	28" x 18.5" x 16"



GPA-TOTE8

GPA-TOTE10



SPEAKER STAND / SUB POLE BAGS



- Rugged Nylon Bag Designed for Carrying Two Speaker Stands or Sub Poles
- GPA-SPKSTDBG-50 and 58 have One Compartment
- GPA-SPKSTDBG-50DLX, 58DLX & GPA-SPKRSPBG-42DLX have Two Separate Compartments to Prevent Scratching
- Web Handles, Carrying Strap and Heavy-Duty Zippers

BEST
SELLER



Model	Interior Dimensions
GPA-SPKSTDBG-50	50" x 9" x 9"
GPA-SPKSTDBG-50DLX	50" x 9" x 9"
GPA-SPKSTDBG-58	57.5" x 16.5" x 2"
GPA-SPKSTDBG-58DLX	57.5" x 16.5" x 2"
GPA-SPKRSPBG-42DLX	42" x 3" x 3"



Carrying Strap and Heavy-Duty Zipper

CONVERTIBLE SPEAKER COVER

- Speaker Cover with Hideaway Rain Cover Designed to Fit While on Speaker Stand
- Zippered Access to Speaker Front so Speaker Can Function While Covered
- Access to Handles with Hook and Loop Cover
- Access to Rear Control Panel Allows Cables to Remain Plugged In
- Patent Pending

Model	Fits
GPA-SCVR450-515	JBL 515 and Mackie SRM 450

Built-In Rain Jacket Easily
Stores in Pocket



Product Video Available
youtube.com/gatorcases



NEW



GPA SERIES COVERS

SLIP-ON SPEAKER COVERS

- Padded Speaker Slip Cover Designed to Fit the Hottest 12" Speaker Cabinets on the Market
- Built-In Waterproof Backing
- Handle Holes on the Top of the Cover Align with the Built-In Handles of the Speaker Providing Access for Moving Case with Cover On

Model	Fits	Interior Dims
GPA-CVR08	Fit QSC K8, Turbosound iQ8, and Yamaha DXR	18" x 11.2" x 11.2"
GPA-CVR10	Fit QSC K10, Turbosound iQ10, and Yamaha DRX10	19.8"x13.3"x12.6"
GPA-CVR12	Fit QSC K12, Turbosound iQ12, and Yamaha DRX12	23.7" x 15.4" x 14.6"

STRETCHY COVERS

SPEAKER STAND AND SPEAKER COVERS

- A Clean, Professional Look for DJ, Corporate, or Worship Applications
- Acoustically Translucent Material
- Machine Washable
- Zippered Carry Pouch Included
- Available in White or Black

SPEAKER CABINET COVERS

- Stretchy Dust Covers to Fit Most 10"-12" and 15" Portable Speaker Cabinets

SPEAKER STAND COVERS

- Stretchy Cover Designed to Fit Most Tripod Style Speaker Stands
- Height Stretches from 3.75ft to 7.25ft
- Width Stretches from 3.25ft to 4.5ft

Model	Fits	Color
GPA-STAND-1-B	Single Side	Black
GPA-STAND-1-W	Single Side	White
GPA-STAND-2-B	Two Sides	Black
GPA-STAND-2-W	Two Sides	White



Zippered Carry
Pouch Included



GPA-STAND-2-B



GPA-STRETCH-10-W

Model	Fits	Color
GPA-STRETCH-10-B	Stretches to fit most 10" and 12" JBL EON and Mackie SRM style speaker cabinets	Black
GPA-STRETCH-10-W	Stretches to fit most 10" and 12" JBL EON and Mackie SRM style speaker cabinets	White
GPA-STRETCH-15-B	Stretches to fit most 15" JBL EON and Mackie SRM style speaker cabinets	Black
GPA-STRETCH-15-W	Stretches to fit most 15" JBL EON and Mackie SRM style speaker cabinets	White

G-TOUR™ SERIES LCD LIFT CASES

- Lift Height Positions up to 60" (Center Mounting Bracket Heights). Includes Universal Mounting Bracket
- Thick Plywood Construction with Durable Laminated Exterior and Carpet Covered Interior
- External Dry Erase Writing Label for Identification
- Durable Latches and Four Heavy-Duty Industrial Casters (Two Locking) *Lift 65 Case has Six Casters (Two Locking)
- Self Adhesive "Tilt Watch" Indicator to Warn and Notify of Improper Handling During Transport

Model	Fits
G-TOUR ELIFT 42	Screens up to 42"
G-TOUR ELIFT 47	Screens up to 47"
G-TOUR ELIFT 55	Screens up to 55"

ELIFT LCD/LED CASES

- Electric Lift Mechanism
- Heavy-Duty EVA Rubber Nesting
- Collapsible Internal Lid Encloses Case, Giving it a Clean Presentation When in Use
- Self Contained Electrical Power Cord



Product Video Available
youtube.com/gatorcases



Attached Control



Heavy-Duty Nesting



Collapsible Internal Lid



Self Contained
Electrical Cord



G-TOUR™ LIFT SERIES

- Non-Electric Hydraulic Assisted Lift Case, Extends Smoothly with a Load of up to 125 lbs
- Built-In Access Door for Power Connection
- Laptop Tray Fits on Front, Left or Right Sides of Case and Stores Inside the Case
- Includes Presentation Drape that Covers Case and Frame

Model	Weight	Interior LCD Space	Exterior Dimensions
G-TOURLCDLIFT55	297 lbs	54" x 34" x 10"	55.9" x 52.4" x 24.4"
G-TOURLCDLIFT65	340 lbs	66" x 38" x 10"	69.9" x 56.4" x 24.4"



Removable Laptop Tray



Tilt Watch Indicator & Dry
Erase Label



Product Video Available
youtube.com/gatorcases

G-TOUR™ LCD CASES

Gator's G-Tour Series LCD / Plasma cases offer superior quality and protection with functionality. All G-Tour cases are constructed of heavy-duty plywood with a laminated exterior for added durability. The cases include the Gator signature red twist latches and spring-loaded rubber gripped handles. The heavy-duty commercial-grade hardware and reinforced ball corners are made to withstand constant transport.

- Attached Caster Board with Four Wheels, Two of Which are Locking
*Minor Assembly for Casters
- EVA Interior Protection
- Easily Adjustable Interior
- Extra Wide Caster Board to Prevent Tipping

G-TOURLCDV2-2632, 3743, 4350, 5055, 6065 VERSIONS FEATURE:

- Extra Wide Caster Board to Prevent Tipping

G-TOURLCDV2-3743-X2, 4350-X2, 5055-X2, 6065-X2 VERSIONS FEATURE:

- Holds Two Screens Securely

Model	Interior Dimensions	Description
G-TOURLCDV2-2632	32.5" x 25.5" x 6.3"	Fits most 26" to 32" Screens
G-TOURLCDV2-3743	43" x 30.5" x 6.3"	Fits most 37" to 43" Screens
G-TOURLCDV2-3743-X2	(2x) 43" x 30.5" x 6.3"	Fits two 37" to 43" Screens
G-TOURLCDV2-4350	58.33" x 36.25" x 9"	Fits most 43" to 50" Screens
G-TOURLCDV2-4350-X2	(2x) 49.5" x 30.5" x 6.3"	Fits two 43" to 50" Screens
G-TOURLCDV2-5055	55" x 35" x 6.3"	Fits most 50" to 55" Screens
G-TOURLCDV2-5055-X2	(2x) 55" x 35" x 6.3"	Fits two 50" to 55" Screens
G-TOURLCDV2-6065	62.5" x 36" x 6.3"	Fits most 60" to 65" Screens
G-TOURLCDV2-6065-X2	(2x) 62.5" x 36" x 6.3"	Fits two 60" to 65" Screens



**Reinforced Protective
Ball Corners**



**Spring Loaded
Twist Latches**



**Rubber-Gripped
Comfort Handles**



**Divider is Adjustable
to Fit Monitor**

G-TOURLCDV2-4350-X2

G-TOURLCDV2-6065

G-TOURLCDV2-2632



**2X Versions Include a Built-In Divider
System to Hold Two Screens Securely**



ROTATIONALLY MOLDED LCD/LED/PLASMA CASE

Gator's G-LCD series is designed to offer serious protection and easy mobility to a wide range of consumer and commercial LCD/LED/Plasma screens, with a price tag that still makes sense for today's value priced LCDs. Rotationally molded from rugged polyethylene plastic and featuring a unique molded screen support system, the G-LCD is sure to be the new standard in LCD/LED transport. Made in the USA from recycled materials.

- Virtually Indestructible LLDPE Polyethylene Lightweight Plastic Construction
- Two Unbreakable, Molded-In Handles on Base for Lifting and Loading
- Aluminum Extrusion Handles for Lid Removal
- Built-In Dry Erase White Board to Label Contents
- Heavy-Duty 3" Casters with Rubber Wheels; Includes Two Swivel Casters with Brakes and Two Fixed Casters for Control and Steering
- Heavy-Duty 1.5" Nylon Web Straps and YKK Buckles Secure Lid to Base
- Molded End Supports with Foam Lining Protect Screen from Shock
- Integrated "UP" Arrows Notify Shippers to Keep Upright During Transport
- Will Accommodate Most Screens with Pedestal Stand Attached
- Black Cases are Made from 100% Recycled Material
- G-LED-3747-2X & G-LED-5055-2X Each Fit Two LED Screens Per Case and Adjust from 1.5" to 3" Depth
- Patent Pending

Custom colors available for minimum quantity orders.
Email info@gatorcases.com for more information.



Double LED Interior



Single LCD Interior

Model	Screen Size
G-LCD-2632	Fits Most 26" - 32" Screens
G-LCD-4042	Fits Most 40" - 42" Screens
G-LCD-4647	Fits Most 46" - 47" Screens
G-LCD-5055	Fits Most 50" - 55" Screens
G-LED-3747-2X	Fits Two 37"- 47" LED Screens
G-LED-5055-2X	Fits Two 50"- 55" LED Screens



Product Video Available
youtube.com/gatorcases



Made From
Recycled Materials

MONITOR2-GO

EVA MOLDED LCD CASE

- Compact Carry Case for Flat Screen Monitors
- Lightweight EPS Construction with EVA Reinforcement
- Internal Padded Straps to Restrain the Monitor
- Storage Compartment for Cables and Other Peripherals
- Soft Adjustable Base Support
- Ergo Grip Carry Handle and Padded Shoulder Strap

Model	Description
G-MONITOR2-GO19	Fits up to 19" Flat Screen Monitors
G-MONITOR2-GO22	Fits up to 22" Flat Screen Monitors

Built-In Storage for Accessories

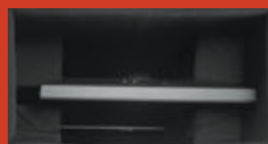


Perfect for iMac™

LIGHTWEIGHT LCD MONITOR CASES

- Lightweight LCD Monitor Carry Case
- Lined Polyethylene Foam Interior and Nylon Exterior
- Tricot-Covered Hook and Loop Adjustable Interior Blocks for Various Sized Monitors and Bases
- Rugged Nylon Web Carry Handle and Accessory Pocket
- Exterior Viewable Document and Two Business Card Pockets

Model	Weight	Interior Dimensions
GL-LCD-1922	9.6 lbs	20.5" x 19" x 9.5"
GL-LCD-2224	13 lbs	25" x 20" x 9.5"



LCD TOTES NEW

- Heavy-Duty Nylon Construction
- 25mm PE Foam Padding on All Sides to Protect Screen
- Polyethylene Reinforced Front Provides Protection for Screen
- Tricot Lined Interior
- Dual Zippered Design Allows for Easy Load In
- Durable Nylon Web Carry Handles
- Adjustable and Removable Reinforced Shoulder Strap

Model	Description
G-LCD-TOTE-LG	Fits 40" - 45" Screens
G-LCD-TOTE-MD	Fits 27" - 32" Screens
G-LCD-TOTE-SM	Fits 19" - 24" Screens



Exterior Accessory Pocket with Clear Vinyl Window for Business Card



Product Video Available
youtube.com/gatorcases

IMAC™ TOTE

NEW

- Padded Nylon Creative Professional Tote Bag Designed to Fit the iMac™
- Water Resistant Flecked Grey Exterior with Black Accents
- Adjustable Interior Padding and Foam Block Cradle for Perfect, Secure Fit
- Interior Cable Pocket
- Hard Panel Reinforcement in Front Flap for Extra Screen Protection
- iMac™ Can Be Used in the Case with Two Side Ports and Folding Sun Shield
- Dual-Zipper Enclosure Allows for Easy Loading and Unloading
- Large Exterior Accessory Pocket
- Magnetic Tablet Pocket, Full Width Keyboard Pocket and Media Pockets for Mouse, Trackpad, SD Cards, Hard Drives, and More
- Built-In Rain Cover with Strap and Handle Cut Outs
- Removable Adjustable Carry Strap and Reinforced Handles
- Rubber Feet and PVC Protection on Bottom of Bag

Model	Description
G-CPR-IM21	Fits 21" iMac™
G-CPR-IM27	Fits 27" iMac™



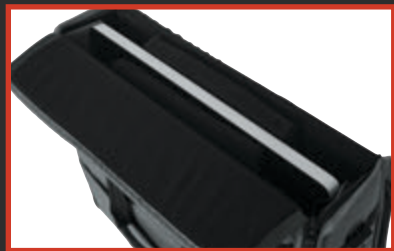
Built-In Cable Ports



Handle Secure Strap



Several Storage Pockets



Adjustable, Padded Interior



Rear Access Cut-Out for Covering Screen When Mounted

PLASMA SCREEN COVERS

- Heavy-Duty Water Barrier Nylon Exterior
- Rigid Polyethylene Sheet Sewn into Liner for Protection
- 10mm Protective Padding with Tricot Interior
- External Document Pocket

Model	Description
G-LCDCOVER-42	Fits 42" Screens
G-LCDCOVER-65	Fits 65" Screens



GTSA-PROJECTOR-SM



Hideaway Compartment
in GTSA-PROJECTOR-SM



TSA SERIES CASES

- Rugged Polyethylene Construction
- Locking TSA Approved Latches
- Comfortable Ergo-Grip Handles
- Heavy-Duty Aluminum Valance and Lid Stay

GTSA-PROJECTOR-SM FEATURES:

- Secure Fit Interior for Optimum Fit of Most Small Projectors
- Hideaway Bottom Compartment for Cables and Accessories

GTSA-PROJECTOR-LG FEATURES:

- Secure Fit Interior for Optimum Fit of Most Medium Projectors
- Internal Divider System has Built in Accessory Pouch with Dividers for Lens Storage



TSA Approved Locking Latch

Model	Internal Dimensions
GTSA-PROJECTOR-SM	up to 15" x 10" x 5.5"
GTSA-PROJECTOR-LG	up to 18" x 18" x 6"



Product Video Available
youtube.com/gatorcases



LAPTOP / PROJECTOR CASE

- Carpet Lined Interior
- Retractable Pull-Out Handle, Recessed Wheels
- Tricot-Covered EPS Padded Projector Compartment with Adjustable Wedges
- Removable EVA Foam-Padded Tray to Hold Laptop

Model	Weight	Laptop Section Dimensions	Projector Section Dimensions	Exterior Dimensions
GTSA-LAPTOP	10.6 lbs	16.5" x 11.125" x 2"	13.5" x 11" x 3.625"	19.375" x 14.5" x 9.75"

Removable Laptop Tray

ATA LAPTOP / PROJECTOR / GEAR BAGS

- Perfect for Laptop and Office Peripherals
- Rugged Nylon Construction
- Storage for File Folders and Business Accessories
- Meets Airline Specifications for Carry-On or Check-In
- Removable Built-In Key Chain
- Adjustable Shoulder Strap
- Ergo-Grip Padded Handle

GAV-LTOFFICE FEATURES

- Checkpoint Friendly Tri-Fold Design Allows Both the Laptop and Projector Sections to Fold Flat to Pass Through TSA X-Ray Machines
- Separate Adjustable Cable Storage Also Acts as an Internal Divider for Projector Section

GAV-LTOFFICE FEATURES

- Retractable Tow-Handle and Wheels
- Separate Adjustable Cable Storage Also Acts as an Internal Divider for Projector Section

Model	Weight	Laptop Section Dimensions	Projector Section Dimensions	Exterior Dimensions
GAV-LTOFFICE	5.2 lbs	16.25" x 13.25" x 1.5"	16.5" x 13.75" x 4"	17.25" x 15.5" x 8"
GAV-LTOFFICE-W	10 lbs	16" x 13.75" x 2.25"	16" x 13.75" x 3.5"	19" x 10.5" x 14"

Rear Strap on GAV-LTOFFICE Allows it to be Securely Stacked on GAV-LTOFFICE-W by Sliding Over Tow-Handle



Checkpoint Friendly Fold-Out Design



Interior is Customizable for Several Applications. Shown with Portable Printer and Scanner

GAV-LTOFFICE-W



GAV-LTOFFICE



Business Style Pockets for Holding Pens, Mice, Pointers, Keys and Other Accessories



GAV-LTOFFICE-W

G-TOUR™ LED TRANSPORTERS

- G-Tour Case Designed to Fit Eight LED PAR 64
- 12 mm Thick Plywood Construction with Laminated Exterior
- Tongue and Groove Extruded Aluminum Valance
- Red Recessed Twist Latches and Spring-Loaded Rubber-Gripped Handles
- Heavy-Duty Commercial Grade Hardware and Reinforced Ball Corners
- Four Casters, Two Locking

Model	Fits	Dimensions Inside Dividers
G-TOURPAR64LED-8	Eight Par-64 LED's	(8) sections 9.5" x 9.5" x 15.5"



Spring Loaded Twist Latches, Rubber-Gripped Comfort Handles and Heavy-Duty Casters



Individual Compartments to Keep Lights from Bumping or Scratching

G-TOUR™ LEKO TRANSPORTERS

- G-Tour Cases Designed to Fit Eight LEKO Style Lights
- 12 mm Thick Plywood Construction with Laminated Exterior
- Tongue and Groove Extruded Aluminum Valance
- Red Recessed Twist Latches
- Spring-Loaded Rubber-Gripped Handles
- Heavy-Duty Commercial-Grade Hardware
- Reinforced Ball Corners
- Dishes on Top of Case Allow Stacking
- Four Casters, Two Locking

Model	Fits
G-TOUR LEKO-S4	Eight LEKO style lights



ATA TSA LED BAR TRANSPORTER

- Designed to Hold Four 1 Meter LED Light Bars with Clamps Attached
- Four Heavily Padded Interior Compartments
- Nearly Indestructible Polyethylene Construction
- Two TSA Locking Latches with Impact Diversion Dishes
- 200 lb Weight Capacity, Recessed In-Line Wheels

Model	Fits	Dimensions Inside Dividers
GTSA-LEDBAR4	(4) 1 meter LED Light Bars	41" x 6.2" x 3.5"



Holds Light Bars with Clamps Attached

LED LIGHT BAR TRANSPORTER

- Designed to Hold Four 1 Meter LED Light Bars with Clamps Attached
- Compact Rugged Nylon Construction
- Four Heavily Padded Interior Compartments
- External Accessory Compartment
- Built-In Wheels and Pull-Out Handle

PAR CAN TRANSPORTERS

- Compact Rugged Nylon Construction
- Collapsible Design for Easy Storage
- Individual Compartments for Par Cans with Removable Hook and Loop Divider
- Built-In Wheels and Pull-Out Handle

Model	Fits	Dimensions Inside Dividers
G-PAR 64LED4	Four Par-64 LED's	(4) sections 9" x 9" x 9.5"
G-PAR 64LED8	Eight Par-64 LED's	(8) sections 9" x 9" x 9.5"
G-LEDBAR-4	Four 1 meter LED Light bars	(4) sections 41" x 6.2" x 3.5"



Individual PAR Can Compartments



G-LEDBAR-4



G-PAR 64LED4

G-TOUR TRUCK PACK

FLIGHT STYLE TRUCK PACK TRUNKS

- 9mm Plywood Construction with Laminated Exterior
- Red Recessed Twist Latches
- Heavy-Duty Commercial Grade Plated Hardware and Reinforced Ball Corners
- Truck Pack Trunk with Hinged Lid and Grey Carpet Interior
- Recessed Dishes on Top of Case Allow Stackability
- 4 Casters, 2 Locking



Two Plywood Dividers Compartmentalize the Interior of the Case

Model	Interior Dimensions	Interior Styles
G-TOURTRK3022HS	28.25" x 20.75" x 20.75"	Empty Shell
G-TOURTRK4530HS	43.25" x 28.25" x 28.25"	Empty Shell
G-TOURTRK302212	27.5" x 19.50" x 17.50"	Tray & Divider System
G-TOURTRK453012	42.75" x 28" x 25"	Tray & Divider System



ROTO SERIES

ROTATIONALLY MOLDED UTILITY CASES

- Rotationally Molded Polyethylene Utility Case
- Built-In Pressure Release Valve
- Stackable Design
- Recessed Wheels
- Black powder coated stainless steel hardware
- 4 Recessed spring loaded handles
- 5 Recessed Twist Latches; Center latch is pad lockable
- Lid Depth 3", Base Depth 8"
- Made in the USA



Built-In Pressure Release Valve

Model	Interior Dimensions	Interior Style
GXR-2819-0803	28" x 19" x 11"	Empty Shell
GXR-3219-1603	32" x 19" x 19"	Empty Shell
GXR-4517-0803	45" x 17" x 11"	Empty Shell
GXR-4517-1503	45" x 17" x 18"	Empty Shell
GXR-5517-0803	55" x 17" x 11"	Empty Shell
GXR-5517-1503	55" x 17" x 18"	Empty Shell



TITAN SERIES™

RUGGED EQUIPMENT CASES

- Water and Dust Proof with UP 67 Certification
- ATA-300 Flight Safe rating
- Impact Proof Lightweight NK-7 Resin
- Easy Release Powerclaw™ Latching System
- Soft Grip Comfort Handle
- Pad Lockable
- Optional Pluck and Pull Layered Diced Foam Inserts Available
- Select Models Available with Adjustable Divider Inserts



Model	Interior Dimensions	Interior Style
GU-0907-05-WPDV	9.4" x 7.4" x 5.5"	Divider Insert
GU-1309-06-WPDV	13.8" x 9.3" x 6.2"	Divider Insert
GU-1510-06-WPDV	15" x 10.5" x 6.2"	Divider Insert
GU-1711-06-WPDV	17" x 11.8" x 6.4"	Divider Insert
GU-1813-06-WPDV	18" x 13" x 6.9"	Divider Insert
GU-2011-07-WPDV	20.5" x 11.3" x 7.5"	Divider Insert
GU-2014-08-WPDV	20" x 14" x 8"	Divider Insert
GU-2217-08-WPDV	22" x 17" x 8.2"	Divider Insert
GU-0705-03-WPDF	7.4" x 4.9" x 3.1"	Diced Foam
GU-0806-03-WPDF	8.4" x 6" x 3.7"	Diced Foam
GU-0907-05-WPDF	9.4" x 7.4" x 5.5"	Diced Foam
GU-1309-03-WPDF	13.2" x 9.2" x 3.8"	Diced Foam
GU-1309-06-WPDF	13.8" x 9.3" x 6.2"	Diced Foam
GU-1510-06-WPDF	15" x 10.5" x 6.2"	Diced Foam
GU-1711-06-WPDF	17" x 11.8" x 6.4"	Diced Foam
GU-1813-06-WPDF	18" x 13" x 6.9"	Diced Foam
GU-2011-07-WPDF	20.5" x 11.3" x 7.5"	Diced Foam
GU-2014-08-WPDF	20" x 14" x 8"	Diced Foam
GU-2015-10-WPDF	20.5" x 15.3" x 10.1"	Diced Foam
GU-2217-08-WPDF	22" x 17" x 8.2"	Diced Foam
GU-2217-13-WPDF	22" x 17" x 12.9"	Diced Foam
GU-0705-03-WPNF	7.4" x 4.9" x 3.1"	Empty Shell
GU-0806-03-WPNF	8.4" x 6" x 3.7"	Empty Shell
GU-0907-05-WPNF	9.4" x 7.4" x 5.5"	Empty Shell
GU-1309-03-WPNF	13.2" x 9.2" x 3.8"	Empty Shell
GU-1309-06-WPNF	13.8" x 9.3" x 6.2"	Empty Shell
GU-1510-06-WPNF	15" x 10.5" x 6.2"	Empty Shell
GU-1711-06-WPNF	17" x 11.8" x 6.4"	Empty Shell
GU-1813-06-WPNF	18" x 13" x 6.9"	Empty Shell
GU-2011-07-WPNF	20.5" x 11.3" x 7.5"	Empty Shell
GU-2014-08-WPNF	20" x 14" x 8"	Empty Shell
GU-2015-10-WPNF	20.5" x 15.3" x 10.1"	Empty Shell
GU-2217-08-WPNF	22" x 17" x 8.2"	Empty Shell
GU-2217-13-WPNF	22" x 17" x 12.9"	Empty Shell

TSA SERIES UTILITY CASES

TSA APPROVED HARD-SHELL CASES

Model	Interior Dimensions	Interior Styles
GTSA-UTLDF-111605	11" x 16" x 5"	Diced Foam
GTSA-UTLDF-191907	19" x 19" x 7"	Diced Foam
GTSA-UTLDF-222508	22" x 25" x 8"	Diced Foam
GTSA-UTL203008	20" x 30" x 8"	Empty Shell
GTSA-UTLPLT1813	18" x 13" x 7"	2 Removable Tool Pallets
GTSA-KEY49	36.5" x 12.5" x 4"	Included Blocks & Straps
GTSA-KEY61	44" x 17.38" x 6"	Included Blocks & Straps
GTSA-KEY76	51.5" x 18" x 5.5"	Included Blocks & Straps
GTSA-KEY76D	51.25" x 20" x 8"	Included Blocks & Straps
GTSA-KEY88	59" x 19" x 6.63"	Included Blocks & Straps
GTSA-KEY88D	59" x 19" x 7"	Included Blocks & Straps
GTSA-KEY88SL	54" x 15" x 6"	Included Blocks & Straps
GTSA-KEY88SLXL	57" x 15" x 6"	Included Blocks & Straps

- Nearly Indestructible Polyethylene Construction
- Unique Wedge and Block Design for Interior Customization
- Two TSA Locking Latches with Impact Diversion Dishes
- 200lb Recessed In-Line Wheel Weight Capacity
- Two Rubber Gripped Handles with 130lb Weight Capacity
- Solid Aluminum Valance with Black Powder Coated Finish





VISIT GATORCO.COM
For more information about our products



GATOR frameworks

GATOR rackworks

GATOR ProtectorCases

